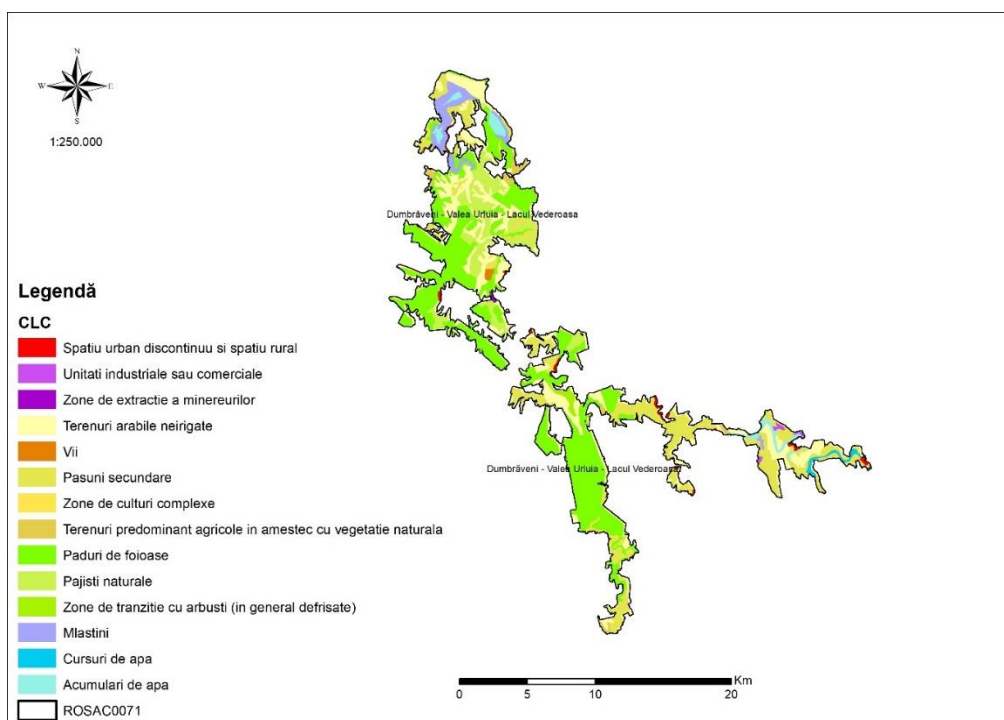


## Annex 6 BIODIVERSITY – 6 Types of ecosystems

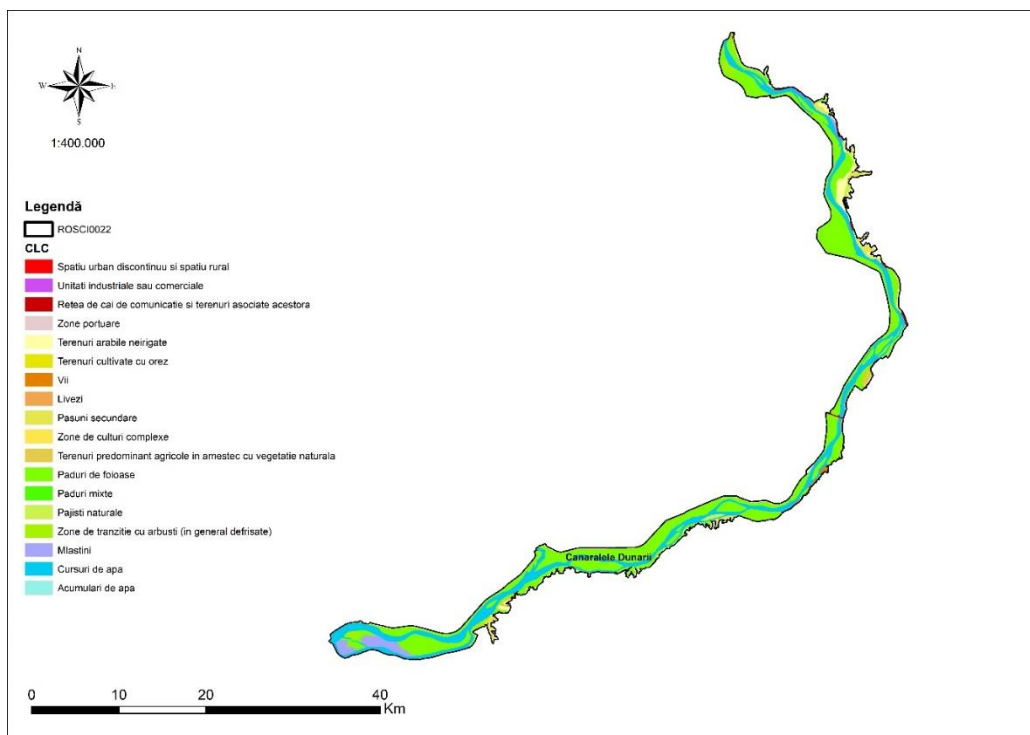
### Analytical situation on the categories of habitats at the level of the proximal Natura 2000 sites



**Fig. 1** Distribution map of CORINE habitats at the level of the site ROSAC0071 Dumbrăveni - Valea Urluia - Lacul Vederosa

**Tab. 1** The situation of CORINE habitats at the level of the site ROSAC0071 Dumbrăveni - Valea Urluia - Lacul Vederosa calculated based on the cartographic model

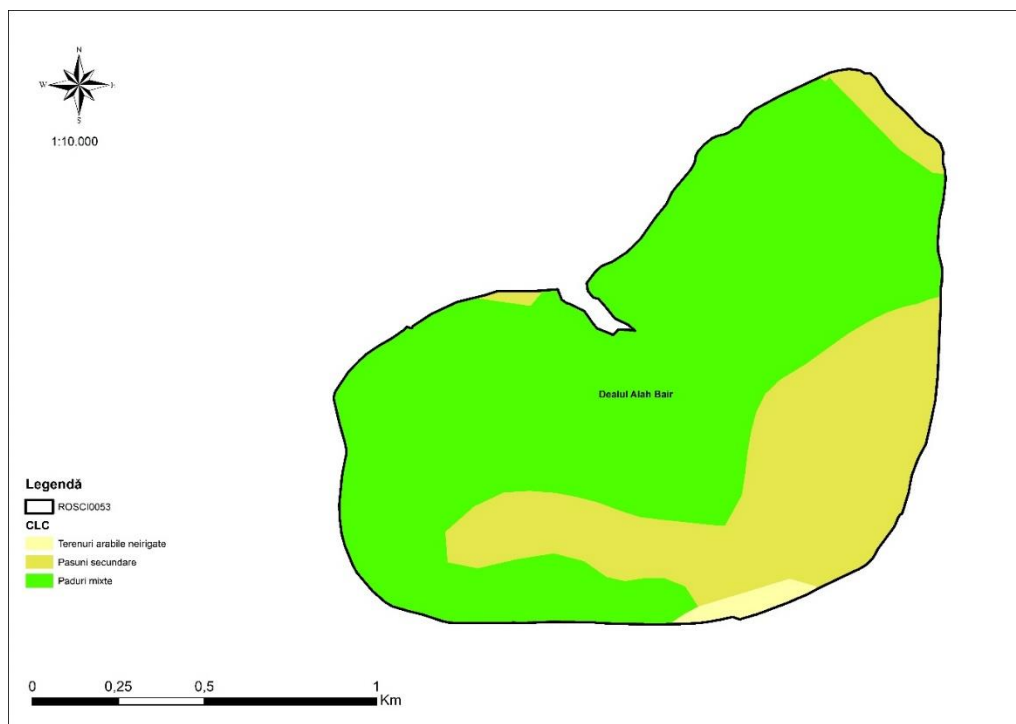
Code CLC	Name	Surface (ha)
112	Discontinuous urban space and rural space	121.52
121	Industrial or commercial establishments	53.78
131	Ore extraction areas	14.22
211	Ore extraction areas	4153.79
221	Vineyards	58.52
231	Secondary pastures	3573.81
242	Areas of complex cultures	0.74
243	Predominantly agricultural land mixed with natural vegetation	247.13
311	Deciduous forests	6867.78
321	Natural meadows	1568.44
324	Transition areas with shrubs (generally deforested)	122.14
411	Swamps	708.42
511	Water courses	119.06



**Fig. 2** Distribution map of CORINE habitats at the level of the site ROSCI0022 Canaralele Dunării

**Tab. 2** The situation of CORINE habitats at the level of the site ROSCI0022 Canaralele Dunării calculated based on the cartographic model

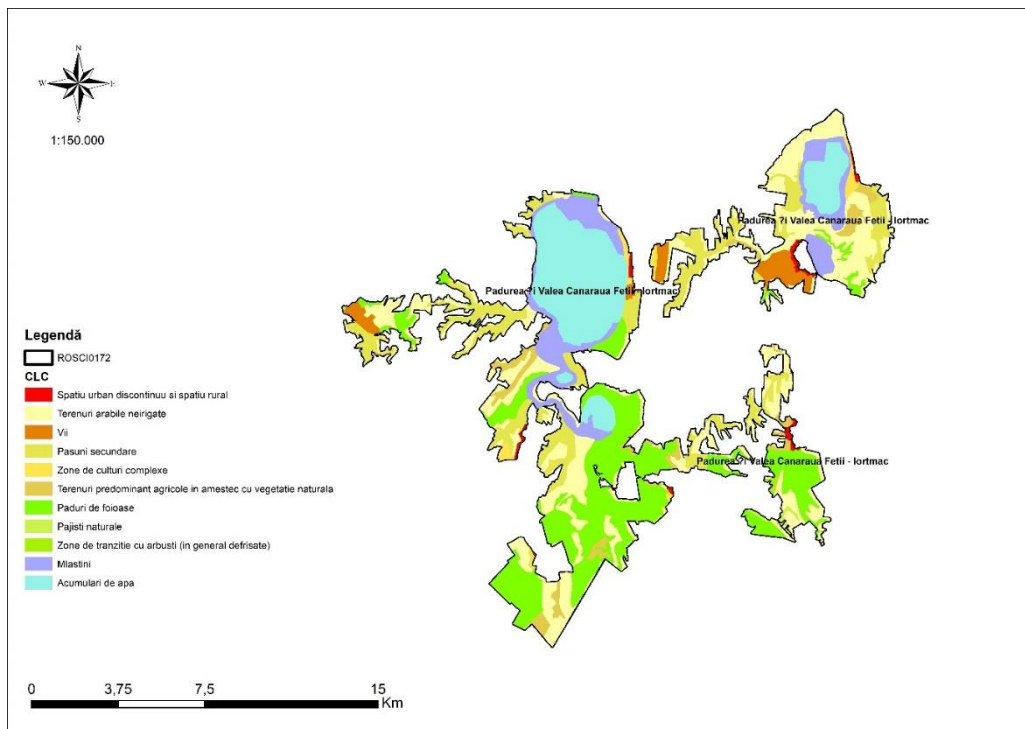
Code CLC	Name	Surface (ha)
112	Discontinuous urban space and rural space	101.24
121	Industrial or commercial establishments	43.36
122	The network of communication routes and their associated lands	25.25
123	Port areas	15.00
211	Non-irrigated arable land	1189.59
213	Lands cultivated with rice	26.65
221	Vineyards	104.63
222	Orchards	39.97
231	Secondary pastures	701.70
242	Areas of complex cultures	23.93
243	Predominantly agricultural land mixed with natural vegetation	145.37
311	Deciduous forests	13985.80
313	Mixed forests	25.69
321	Natural meadows	256.72
324	Transition areas with shrubs (generally deforested)	440.93
411	Swamps	874.43
511	Water courses	8092.57
512	Water accumulations	2.54



*Fig. 3 Distribution map of CORINE habitats at the level of the site ROSCI0053 Dealul Alah Bair*

*Tab. 3 The situation of CORINE habitats at the level of the site ROSCI0053 Dealul Alah Bair calculated based on the cartographic model*

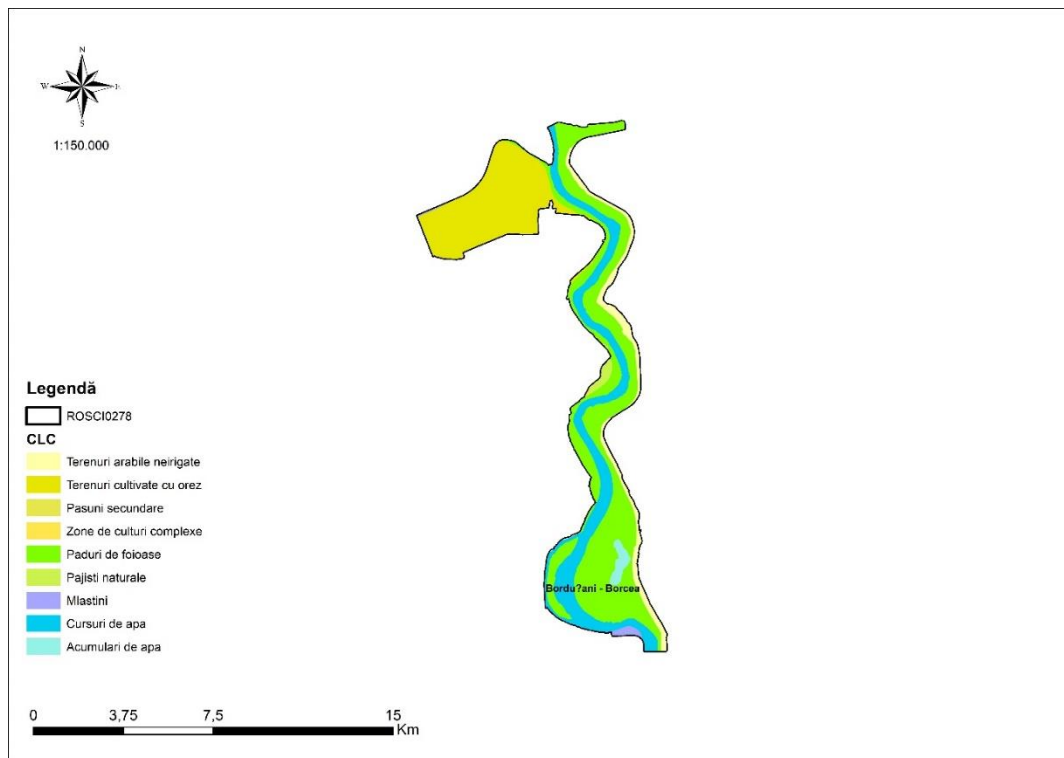
Code CLC	Name	Surface (ha)
211	Non-irrigated arable land	2.27
231	Secondary pastures	54.01
313	Mixed forests	137.06



**Fig. 4** Distribution map of CORINE habitats at the level of the site ROSCI0172 Pădurea și Valea Canaraua Fetii – Iortmac

**Tab. 4** The situation of CORINE habitats at the level of the site ROSCI0172 Pădurea și Valea Canaraua Fetii – Iortmac calculated based on the cartographic model

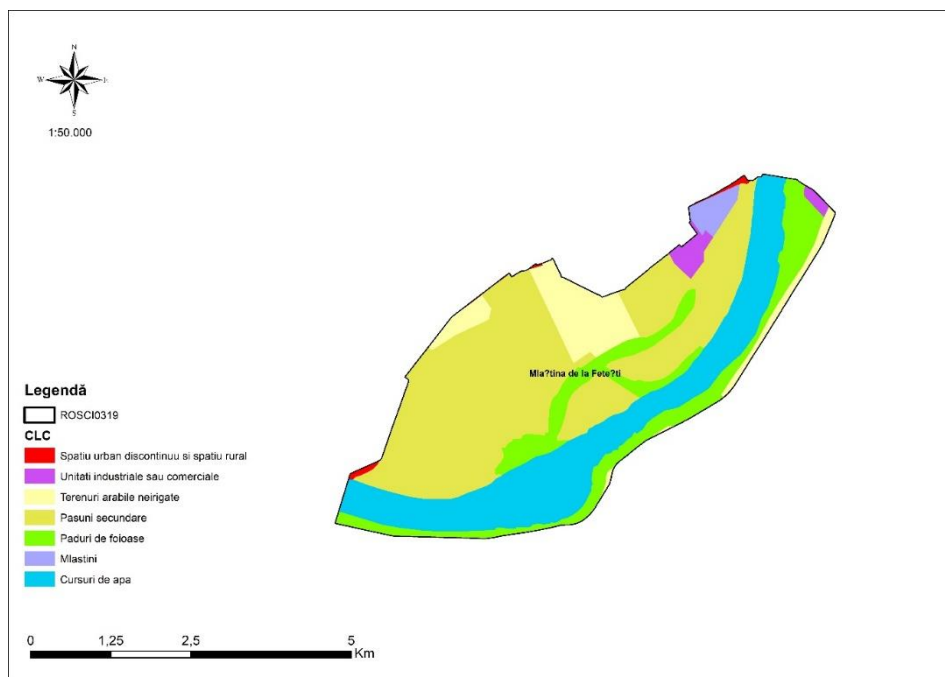
Code CLC	Name	Surface (ha)
112	Discontinuous urban space and rural space	90.47
211	Non-irrigated arable land	3547.60
221	Vineyards	410.46
231	Secondary pastures	1865.81
242	Areas of complex cultures	168.30
243	Predominantly agricultural land mixed with natural vegetation	525.57
311	Deciduous forests	3295.33
321	Natural meadows	40.91
324	Transition areas with shrubs (generally deforested)	21.64
411	Swamps	1272.00
512	Water accumulations	2386.95



**Fig. 5** Distribution map of CORINE habitats at the level of the site ROSCI0278 Bordușani – Borcea;

**Tab. 5** The situation of CORINE habitats at the level of the site ROSCI0278 Bordușani – Borcea calculated based on the cartographic model

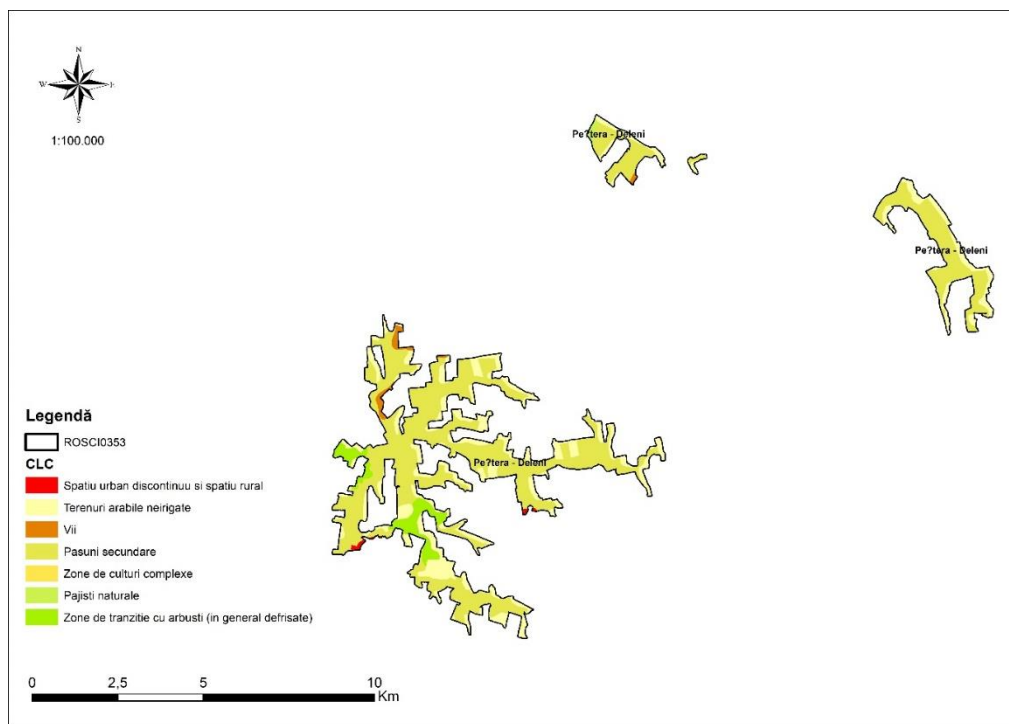
Code CLC	Name	Surface (ha)
211	Non-irrigated arable land	1226.83
213	Lands cultivated with rice	386.39
231	Secondary pastures	1486.24
242	Areas of complex cultures	3.62
311	Deciduous forests	0.02
321	Natural meadows	2566.44
411	Swamps	52.71
511	Water courses	40.34
512	Water accumulations	82.12



**Fig. 6** Distribution map of CORINE habitats at the level of the site *ROSCI0319 Mlaștina de la Fetești*

**Tab. 6** The situation of CORINE habitats at the level of the site *ROSCI0319 Mlaștina de la Fetești* calculated based on the cartographic model

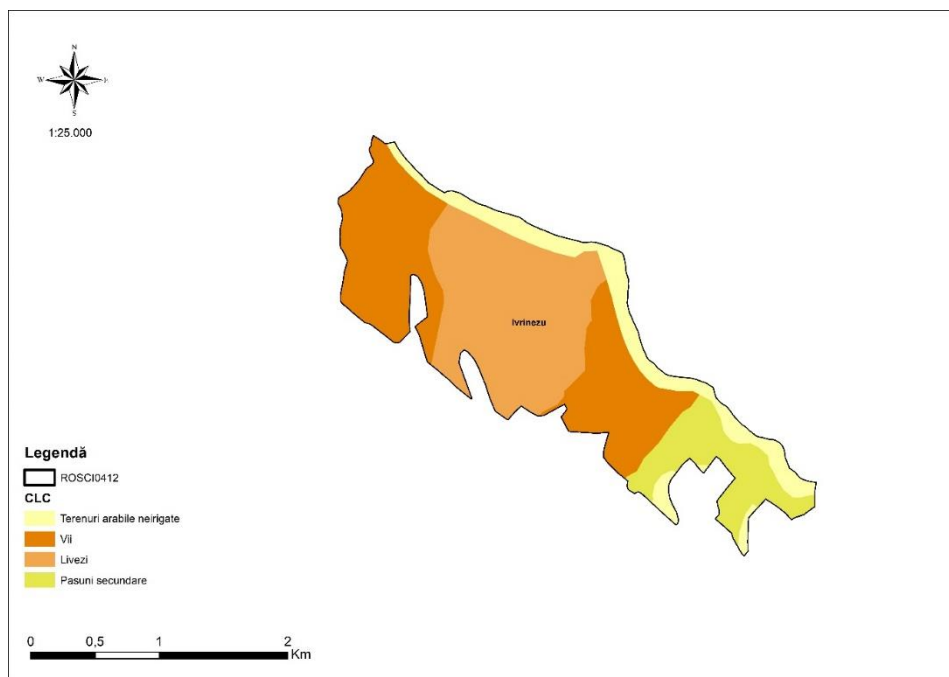
Code CLC	Name	Surface (ha)
112	Discontinuous urban space and rural space	7.33
121	Industrial or commercial establishments	33.70
211	Non-irrigated arable land	192.47
231	Secondary pastures	975.12
311	Deciduous forests	325.37
411	Swamps	32.92
511	Water courses	542.85



**Fig. 7** Distribution map of CORINE habitats at the level of the site ROSCI0353 Peștera – Deleni

**Tab. 7** The situation of CORINE habitats at the level of the site ROSCI0353 Peștera – Deleni calculated based on the cartographic model

Code CLC	Name	Surface (ha)
112	Discontinuous urban space and rural space	7.68
211	Non-irrigated arable land	648.11
221	Vineyards	30.81
231	Secondary pastures	1720.37
242	Areas of complex cultures	0.01
321	Natural meadows	9.97
324	Transition areas with shrubs (generally deforested)	130.32

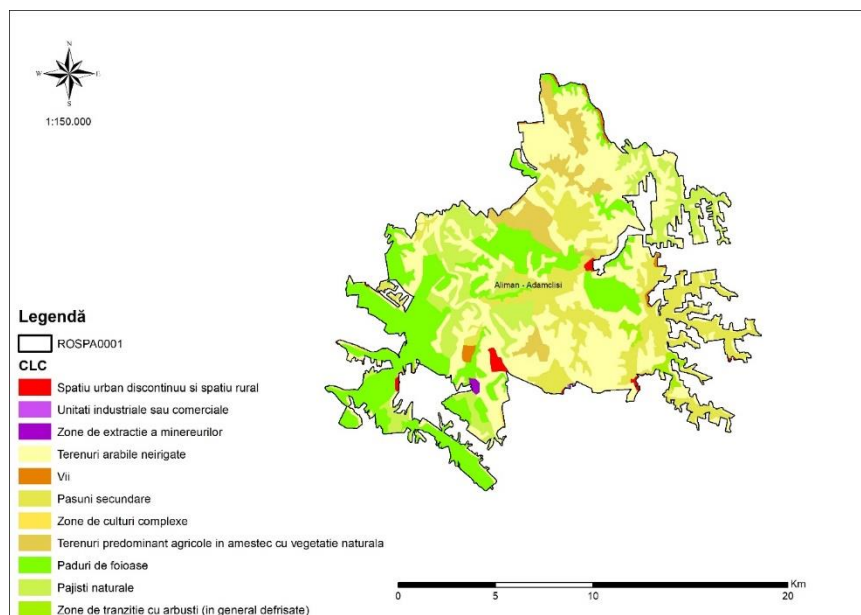


**Fig. 8** Distribution map of CORINE habitats at the level of the site ROSCI0412 Ivrinezu

**Tab. 8** The situation of CORINE habitats at the level of the site ROSCI0412 Ivrinezu calculated based on the cartographic model

Code CLC	Name	Surface (ha)
211	Non-irrigated arable land	56.02
221	Vineyards	153.58
222	Orchards	149.22
231	Secondary pastures	52.04

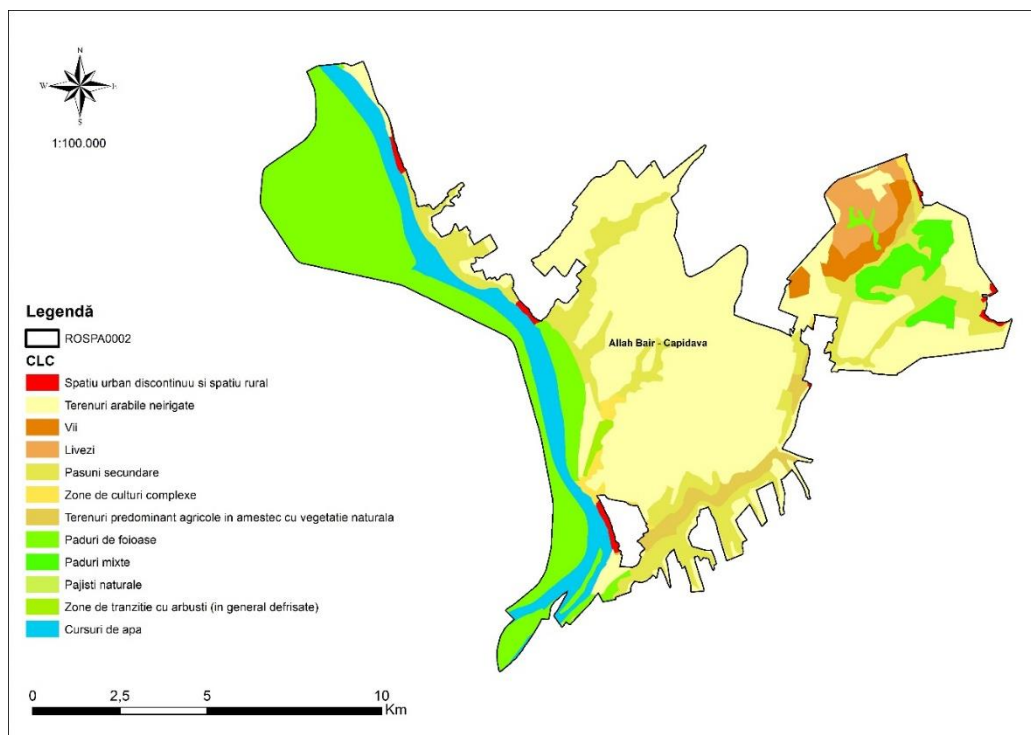




**Fig. 9** Distribution map of CORINE habitats at the level of the site ROSPA0001 Aliman – Adamclisi

**Tab. 9** The situation of CORINE habitats at the level of the site ROSCI0412 Ivrinezu calculated based on the cartographic model

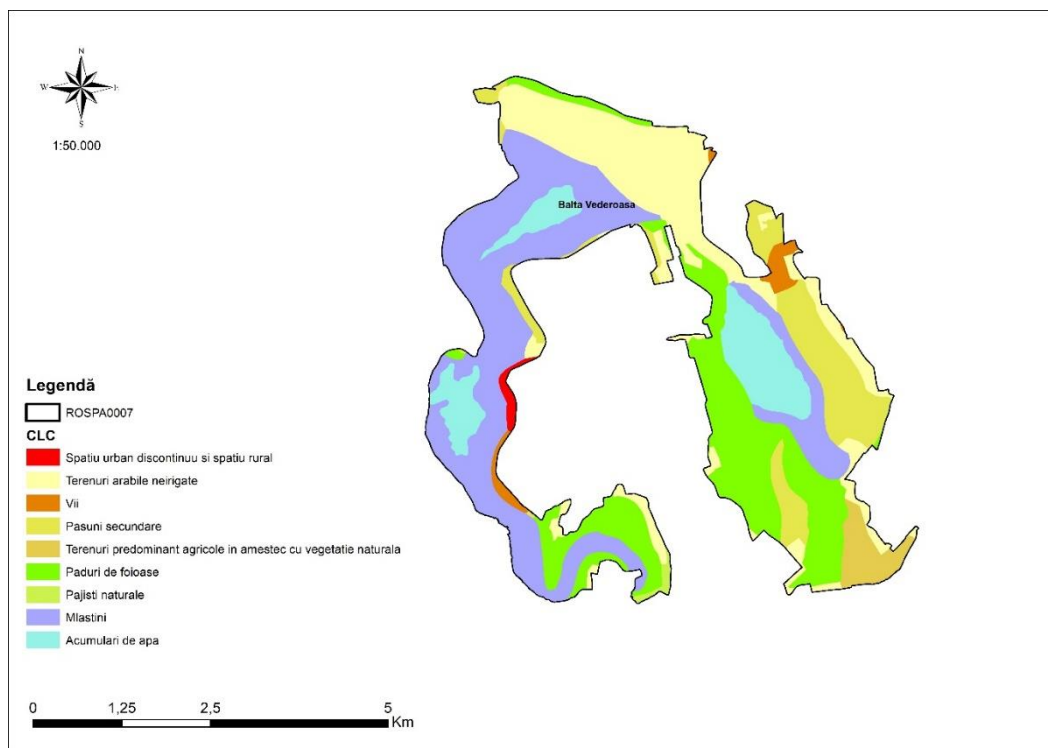
Code CLC	Name	Surface (ha)
112	Discontinuous urban space and rural space	119.28
121	Industrial or commercial establishments	3.56
131	Ore extraction areas	31.13
211	Ore extraction areas	7536.48
221	Vineyards	118.01
231	Secondary pastures	3137.31
242	Areas of complex cultures	10.41
243	Predominantly agricultural land mixed with natural vegetation	1117.64
311	Deciduous forests	4444.61
321	Natural meadows	2237.29
324	Transition areas with shrubs (generally deforested)	152.95



**Fig. 10** Distribution map of CORINE habitats at the level of the site ROSPA0002 Allah Bair – Capidava

**Tab. 10** The situation of CORINE habitats at the level of the site ROSPA0002 Allah Bair – Capidava calculated based on the cartographic model

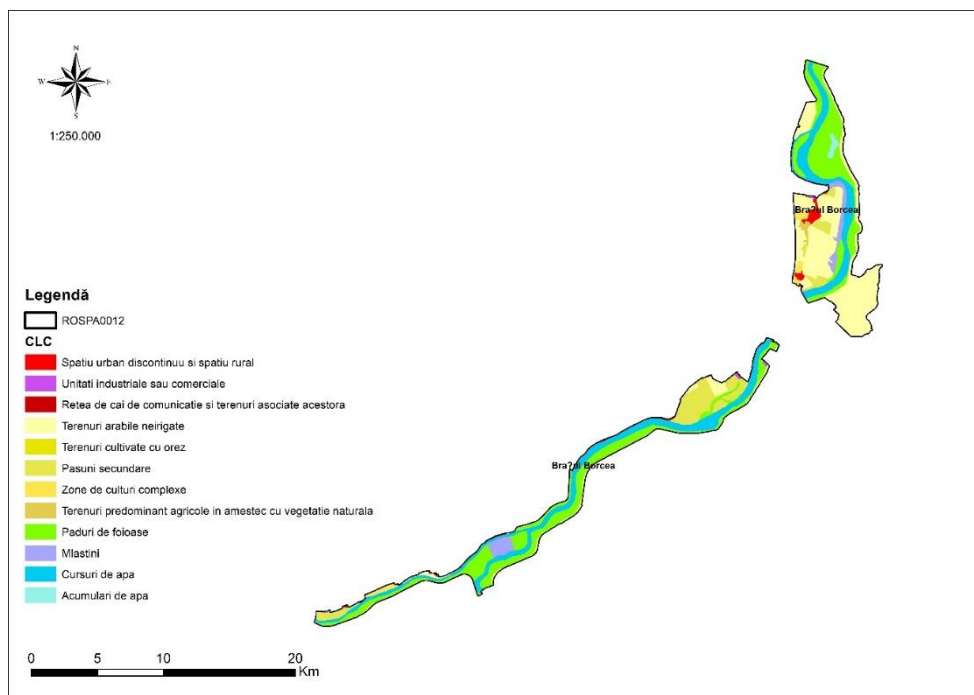
Code CLC	Name	Surface (ha)
112	Discontinuous urban space and rural space	66.44
211	Non-irrigated arable land	5266.98
221	Vineyards	221.76
222	Orchards	291.53
231	Secondary pastures	1591.31
242	Areas of complex cultures	104.69
243	Predominantly agricultural land mixed with natural vegetation	267.43
311	Deciduous forests	2551.20
313	Mixed forests	356.93
321	Natural meadows	2.35
324	Transition areas with shrubs (generally deforested)	40.45
511	Water courses	947.40



**Fig. 11** Distribution map of CORINE habitats at the level of the site ROSPA0007 Balta Vederosa

**Tab. 11** The situation of CORINE habitats at the level of the site ROSPA0007 Balta Vederosa calculated based on the cartographic model

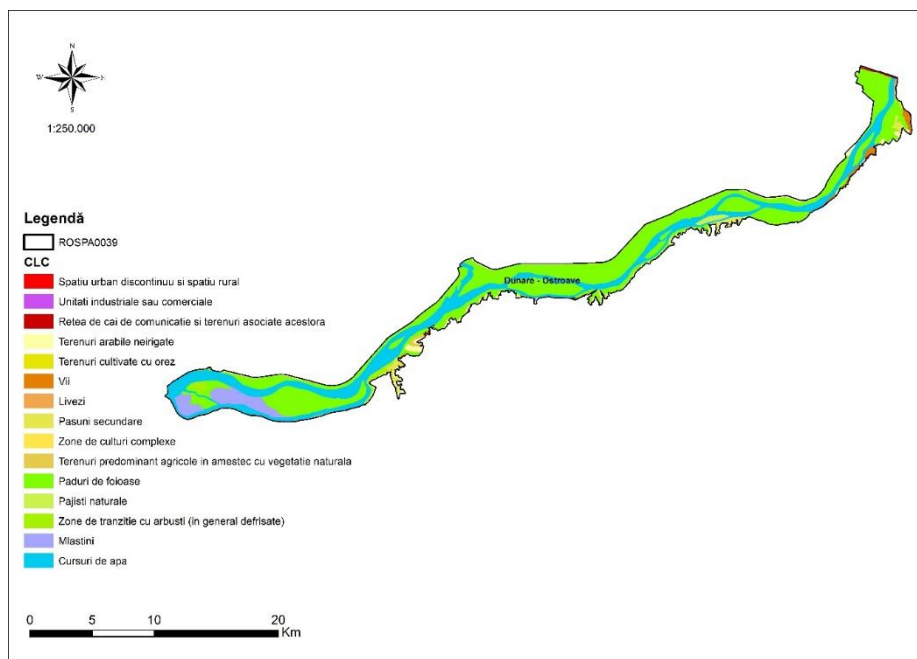
Code CLC	Name	Surface (ha)
112	Discontinuous urban space and rural space	11.52
211	Non-irrigated arable land	440.38
221	Vineyards	33.09
231	Secondary pastures	242.85
243	Predominantly agricultural land mixed with natural vegetation	60.99
311	Deciduous forests	459.88
321	Natural meadows	8.22
411	Swamps	657.64
512	Water accumulations	223.65



**Fig. 12** Distribution map of CORINE habitats at the level of the site ROSPA0012 Brațul Borcea

**Tab. 12** The situation of CORINE habitats at the level of the site ROSPA0012 Brațul Borcea calculated based on the cartographic model

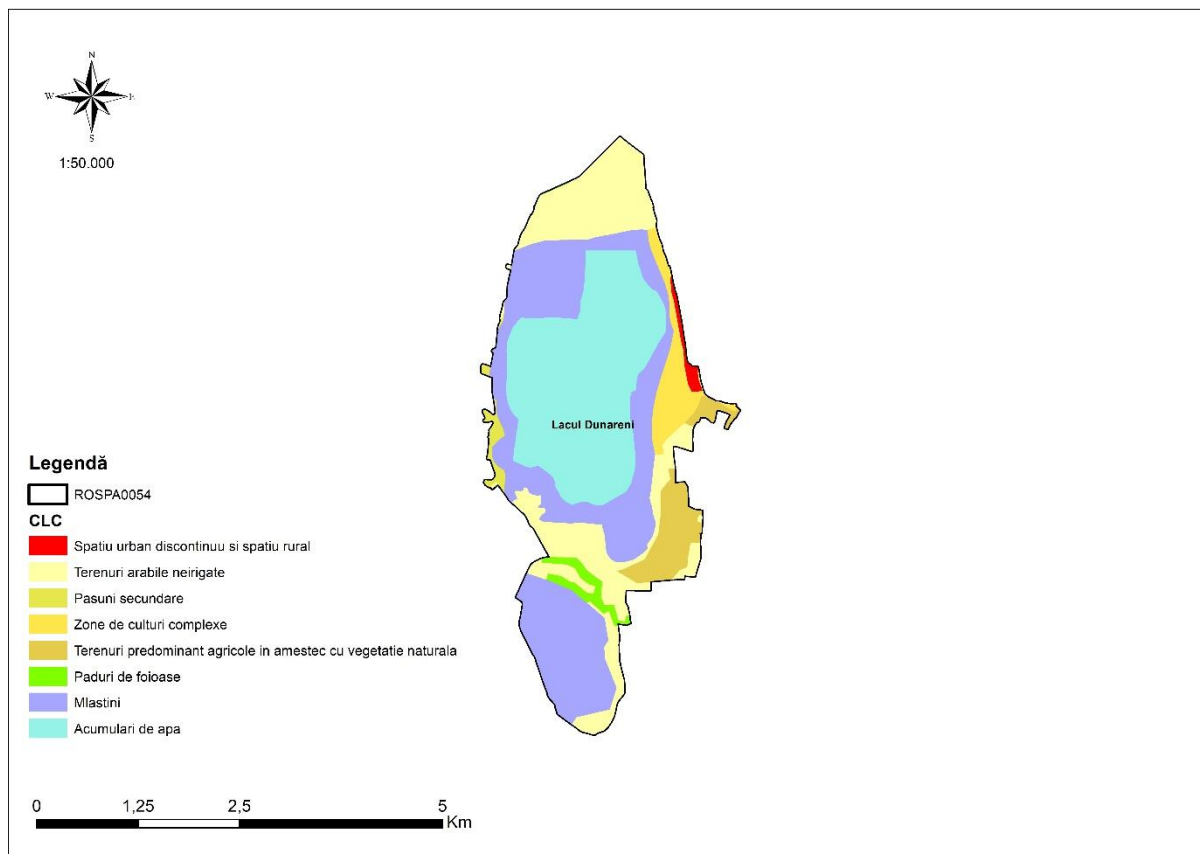
Code CLC	Name	Surface (ha)
112	Discontinuous urban space and rural space	178.35
121	Industrial or commercial establishments	32.08
122	The network of communication routes and their associated lands	2.56
211	Non-irrigated arable land	3689.12
213	Lands cultivated with rice	6.00
231	Secondary pastures	1316.21
242	Areas of complex cultures	217.07
243	Predominantly agricultural land mixed with natural vegetation	68.01
311	Deciduous forests	4142.30
411	Swamps	462.77
511	Water courses	3095.52
512	Water accumulations	82.12



**Fig. 13** Distribution map of CORINE habitats at the level of the site ROSPA0039 Dunăre – Ostroave

**Tab. 13** The situation of CORINE habitats at the level of the site ROSPA0039 Dunăre – Ostroave calculated based on the cartographic model

Code CLC	Name	Surface (ha)
112	Discontinuous urban space and rural space	10.99
121	Industrial or commercial establishments	0.00
122	The network of communication routes and their associated lands	30.55
211	Non-irrigated arable land	475.75
213	Lands cultivated with rice	0.05
221	Vineyards	162.33
222	Orchards	27.26
231	Secondary pastures	273.36
242	Areas of complex cultures	6.64
243	Predominantly agricultural land mixed with natural vegetation	50.03
311	Deciduous forests	8865.25
321	Natural meadows	95.09
324	Transition areas with shrubs (generally deforested)	200.81
411	Swamps	827.01
511	Water courses	5209.40



**Fig. 14** Distribution map of CORINE habitats at the level of the site ROSPA0054 Lacul Dunăreni

**Tab. 14** The situation of CORINE habitats at the level of the site ROSPA0039 Dunăre – Ostroave calculated based on the cartographic model

Code CLC	Name	Surface (ha)
112	Discontinuous urban space and rural space	8.65
211	Non-irrigated arable land	267.96
231	Secondary pastures	12.26
242	Areas of complex cultures	59.18
243	Predominantly agricultural land mixed with natural vegetation	70.30
311	Deciduous forests	20.83
411	Swamps	426.12
512	Water accumulations	403.62

As it was also shown in the previous sections, the focus (interest) of the protective measures was oriented towards the preservation of island elements that preserve a particular, separate biodiversity (e.g. wetlands, groves, silvosteppe areas, etc.) to the detriment of the dominant habitats at the level regional (agroecosystems, steppe areas, etc.).